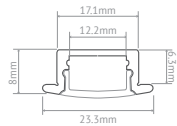
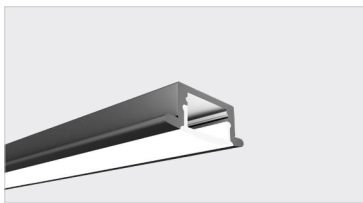
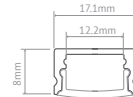


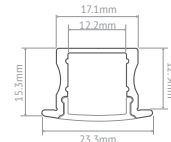
LASER LIGHTING PROFILES



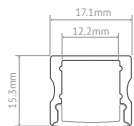
LP1



LP2



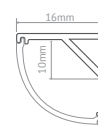
LP3



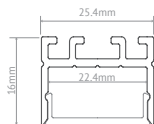
LP4



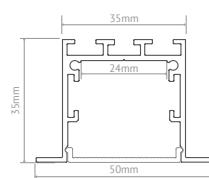
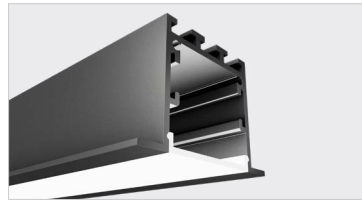
LP7



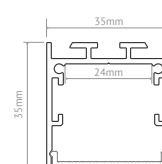
LP8



109



LP3+



LP4+

Ordering Information :

Profile	Wattage	CRI & Colour Temperature	IP Rating	Voltage	Colour
LP1	5W (5W)	927 (CRI 90 2700°K)	20 (IP20)	24 (24V)	CA (Clear Anodized)
LP2	10 (10W)	930 (CRI 90 3000°K)	65 (IP65)		BL (Black)
LP3	15 (15W)	940 (CRI 90 4000°K)			WH (White)
LP4	20 (20W)				
LP7					
LP8					
LP3+					
LP4+					

LP1-10W-27K-20-24-CA

Example : Laser Profile 1 10W/m 2700°K IP20 24V Clear Anodized



MADE IN AUSTRALIA

142 Bridge Rd, Richmond, Victoria, 3121 +61 3 9543 9922
 4 Production St, Beenleigh, Queensland, 4207 +61 7 3382 6689
www.laserlighting.com.au | sales@laserlighting.com.au