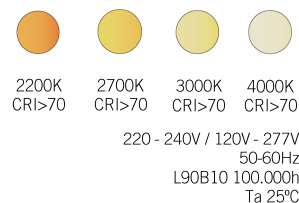
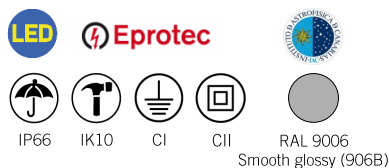


Veka S



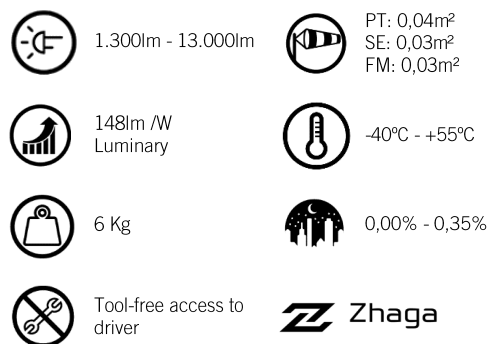
KEY ADVANTAGES

- Integrative aesthetics in any urban space.
- Up to 148lm / W.
- Up to 9 optical distributions.
- Robustness: IP66 + IK10.
- Lifetime L90B10 100,000h at Ta of 25°C.
- Smart Ready: Designed to house both indoor and outdoor communications node through connection bases.
- Complies with the Zhaga standard.
- Access to the equipment without tools.
- 3 different types of fixings.



DESCRIPTION

Veka is the new family of luminaires for street lighting applications of Carandini. Its elegant aesthetics, the latest technology LED technology and the optical distributions that it incorporates make it a high quality solution for urban roads, secondary roads, highways, residential streets, parking lots and bike lanes.



STANDARD COMPLIANCE

- CE
- RoHS
- UNE-EN 60598-1
- UNE-EN 60598-2-3 o 60598-2-5
- UNE-EN 62471:2009
- UNE-EN 60598
- UNE-EN 61000-3-2
- UNE-EN 61000-3-3
- UNE-EN 55015
- UNE-EN 61547
- UNE-EN 62031
- UNE-EN 61347-2-13
- UNE-EN 62384
- UNE-EN 13032-4
- UNE-EN ISO 9227 NSS: 2017 (1000h)

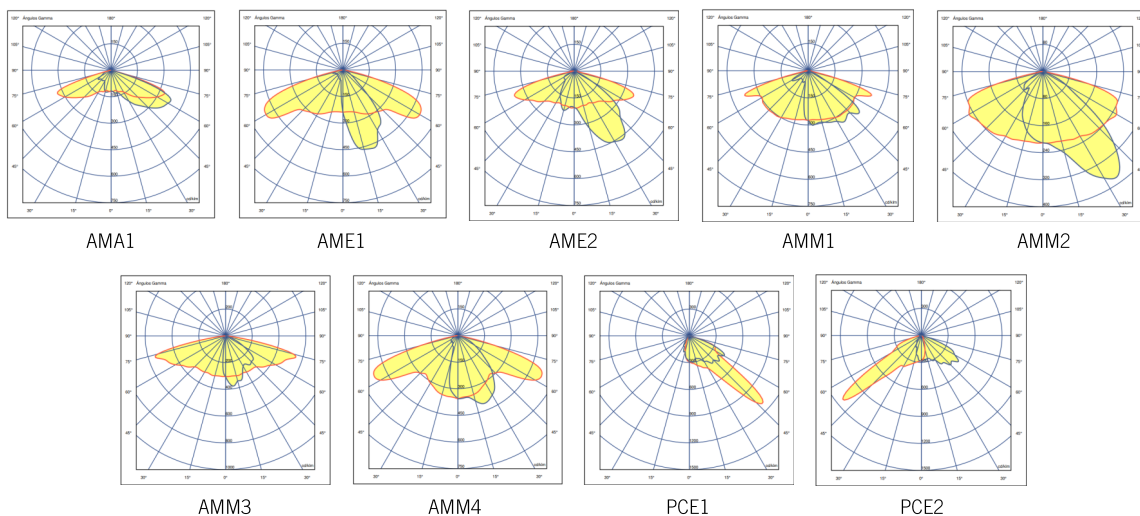
LOGISTICS INFORMATION

| | PT Fixation | SE Fixation |
|-----------------|--------------------|--------------------|
| Gross weight: | 6,4 Kg | 6,4 Kg |
| Units per box: | 1 unit | 1 unit |
| Box dimensions: | 515 x 260 x 275 mm | 610 x 260 x 165 mm |

Measurements performed in ISO 17025 accredited laboratory.
Meets the minimum requirements CEI - IDAE.

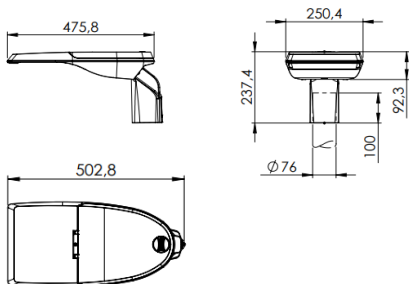
PHOTOMETRIC DISTRIBUTIONS

It has the 9 photometric distributions used for the environments in which this type of luminaire is installed, allows it to adapt to all needs:

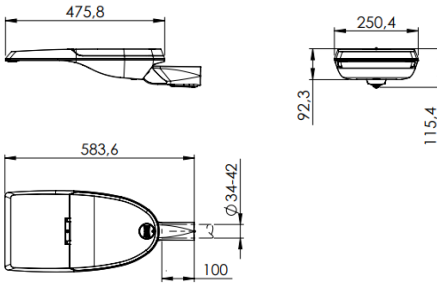


DIMENSIONS

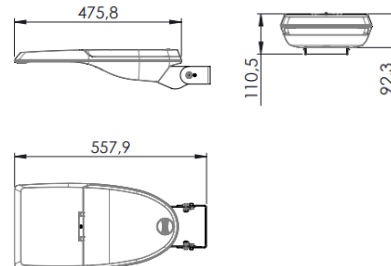
Vertical fixing $\varnothing 76$ mm (PT1)



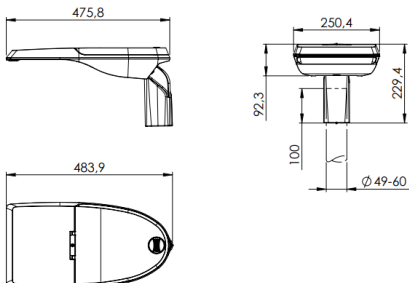
Side fixing $\varnothing 34 / 42$ mm (SE1)



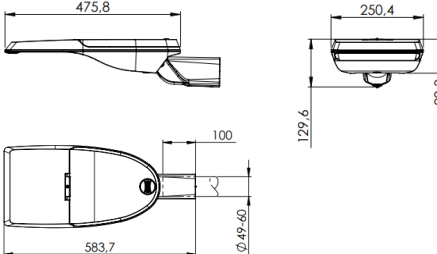
Wall fixing. It incorporates fork (FM1)



Vertical fixing $\varnothing 49/60$ mm (PT2)



Side fixing $\varnothing 49 / 60$ mm (SE2)



APPLICATIONS

Urban roads, secondary roads, residential streets, parking lots and bike lanes.



CHARACTERISTICS VEKA S



| GENERAL CHARACTERISTICS | |
|-------------------------|-----------------------------------------------------------------------------------------------------------------------------------------------------------------|
| Armor and coupling | Aluminum injected at high pressure EN AC-44100 with low copper content <0.1% (AISI304). It incorporates molded silicone gasket housed in the perimeter channel. |
| Finish | Armor and coupling of powder paint gray RAL 9006 Smooth glossy (906B). |
| Closure | Tempered flat glass 5mm thick. |
| Nuts outer and bolts | Stainless steel (AISI304). |
| Watertightness | IP66 (EN 60529) |
| Impact protection grade | IK10 (EN 62262) |
| Operating temperature | Ta -40°C a +55°C According to luminaire configuration. |
| Lifespan | L90B10 100,000h at Ta of 25°C. Light maintenance assessments to TM-21 based on LM-80 data. |

| ELECTRICAL CHARACTERISTICS | |
|----------------------------|------------------------------------------------------------------------------------------------------------------------------------------|
| Electrical class | Class I o Class II |
| Voltage / Frequency | 220V - 240V / 50Hz - 60Hz Optional 120V - 277V |
| Power factor | > 0,9 |
| Harmonic distortion | < 20% |
| Surge protector | Surge protection (1.2 / 50) 10 kV. Maximum current (8/20) 10kA. Maximum voltage (L-N) 320 V. Maximum voltage (L / N-GND) 400 V. |

| MAINTENANCE AND ASSEMBLY | |
|------------------------------|-----------------------------------------------------------------------------------------------------------------------------------------------------------------------------------------------------------------------------------------------------------------------------------------------------------------------------------------------|
| Installation and maintenance | Opening system of the luminaire without tools designed by Carandini. Access to the driver from the top. |
| Fixation | PT1=> Vertical fixing with diameter of 76mm column coupling. PT2=> Vertical fixing with diameter of 49/60mm column coupling. SE1=> Lateral fixation with 34 / 42mm column coupling diameter. SE2=> Lateral fixation with column coupling diameter of 49 / 60mm. FM1=> Wall mounting. It incorporates fork for direct wall fixing. |
| Mechanical regulation | The vertical and lateral fixings have a degree of inclination of + -10° every 2.5°. The wall fixing fork offers a tilt range of + -40° every 2.5°. You can see the angle of inclination on the outside as it is marked on the coupling. |
| Weight with equipment | PT1: 6,2 Kg / PT2: 6 Kg SE1: 5,7 Kg / SE2: 6 Kg FM1: 5,9 Kg |
| Wind area | PT: 0,04m ² SE: 0,03m ² FM: 0,03m ² |
| Pressure compensation valve | Increases the life of the system components and ensures a degree of tightness during the life of the luminaire. |

| LIGHT CHARACTERISTICS | |
|---------------------------------------|------------------------------------------------------------------------------------------------------------------------------------------------------------------------------------------------------------------------------------------------------------------------------------------------------------------------------------------------------------------------------------------------|
| Package real light | 1.300 lm up to 13.000 lm (12 - 103W) |
| LED color temperature | 4,000K (Neutral White, nw). 3,000K (Warm White, ww). 2,700K (Warm White, ww). 2,200K (Warm White, ww). Optionally amber color temperature. |
| Index of reproduction chromatic (CRI) | CRI>70. Other CRI, consult. |
| LEDs | Incorporate from 16, 24,36 and 48 LEDs. |
| F.H.S | Between 0,00% and 0,35% |
| Optics | PMMA polymethylmethacrylate. |
| Photometric distributions | AMA1=> Throw 70° Spread 65° (Type IV) AME1=> Throw 65° Spread 15° (Type I) AME2=> Throw 70° Spread 35° (Type II) AMM1=> Throw 70° Spread 35°/50° (Type III) AMM2=> Throw 60° Spread 35° (Type II) AMM3=> Throw 75° Spread 5°/20° (Type III) AMM4=> Throw 65° Spread 20° (Type II) PCE1=> Throw 50° Spread 55°/60° (Type III) PCE2=> Throw 50° Spread 45°/55° (Type II) |
| LED thermal control | Thermal control by the 3 principles of heat transfer: conduction, convection and radiation that help to achieve long LED and driver lives. |

| MANAGEMENT AND CONTROL | |
|------------------------|-------------------------------------------------------------------------------------------------------------------------------------------------------------------------------------------------------------------------------------------------------------------------------------------------------------|
| Equipment | 1N: LED 1 level. RC: Adjustable LED in header. AF: Dimmable LED 1-10V. RD: Dimmable LED Dali Protocol. RL: Adjustable LED in header (pulses). 2N: Dual level dimmable LED. SR: Adjustable LED Sensor Ready. |
| Autonomous regulation | Regulations programmed from the factory: 56: 50% of the 24: 00h at 6: 00h. 66: 60% of the 24: 00h at 6: 00h. 76: 70% of the 24: 00h at 6: 00h. SC: Programming according to client. |
| CLO regulation | Flow rate during the life of the product: 7: 70% luminous flux throughout the life of the luminaire. 8: 80% luminous flux throughout the life of the luminaire. 9: 90% luminous flux throughout the life of the luminaire. |
| Socket | U: NEMA Socket 3 pin with cover IP65 V: NEMA Socket 5 pin with cover IP65 W: NEMA Socket 7 pin with cover IP65 X: Zhaga Socket 4 pin with cover IP66 Y: Zhaga Socket at the bottom of the luminaire with IP65 cover. Q: Zhaga Socket at the bottom and top of the luminaire with IP65 cover. |
| Photocells | 1: Photocell for NEMA 3, 5 and 7 pin base (20 lux) 2: Photocell for upper Zhaga base (20 lux) 3: Motion sensor for lower Zhaga base. 4: Photocell for upper Zhaga base (20 lux) and motion sensor for lower Zhaga base. |
| Node | Controlux One Controlux Basic |

NOTE: Correct data on the date of printing. The company reserves the right to change the value at any time.

ACCESSORIES

C.SENS Column presence sensor



VEKA S PHOTOS

